



## Configuration of G DATA MailSecurity on a Microsoft Exchange Server 2007



### Content

<b>1.) Prior to installation.....</b>	<b>2</b>
<b>2.) Installation .....</b>	<b>2</b>
<b>3.) Exchange 2007 configuration.....</b>	<b>3</b>
a ) Sending e-mails via SMTP .....	3
b ) Receiving e-mails via SMTP .....	6
c ) Receiving e-mails via POP3 .....	9
<b>4.) G DATA MailSecurity configuration .....</b>	<b>10</b>
a ) Tab „Incoming (SMTP)“ .....	10
b ) Tab „Outgoing (SMTP)“ .....	11
c ) Tab „Incoming (POP3)“ .....	12



## Well up on G DATA business solutions

---

### 1.) Prior to installation

Before installing please check that:

- the Data Execution Prevention feature (under Windows Server 2003/2008 and Windows XP SP2: *Control panel -> System -> Advanced -> Performance Settings -> Data Execution Prevention*) is only enabled for necessary Windows programs and services.
- no previously installed virus protection programs remain in the system registry or system folder on the hard disk (use cleaning tools if necessary).
- all important Windows updates and in particular all available service packs have been installed correctly ( Windows XP SP3, Windows Server 2003 SP2, Windows Vista SP1).
- the contents of all system TEMP folders have been deleted.
- the local port protection for SMTP, IMAP and POP3 of the G DATA AntiVirus Client is deactivated, if the client is installed.

### 2.) Installation

Always make sure you install the latest program version. The appropriate setup is available either on request from our Business Support (<mailto:business-support@gdata.de>) or directly as a download link in our partner web: <http://partnerweb.gdata.de/>

Also make sure that no previously installed antivirus software remains on the systems in question. Always use the cleaning tools offered by the relevant suppliers.



### 3.) Exchange 2007 configuration

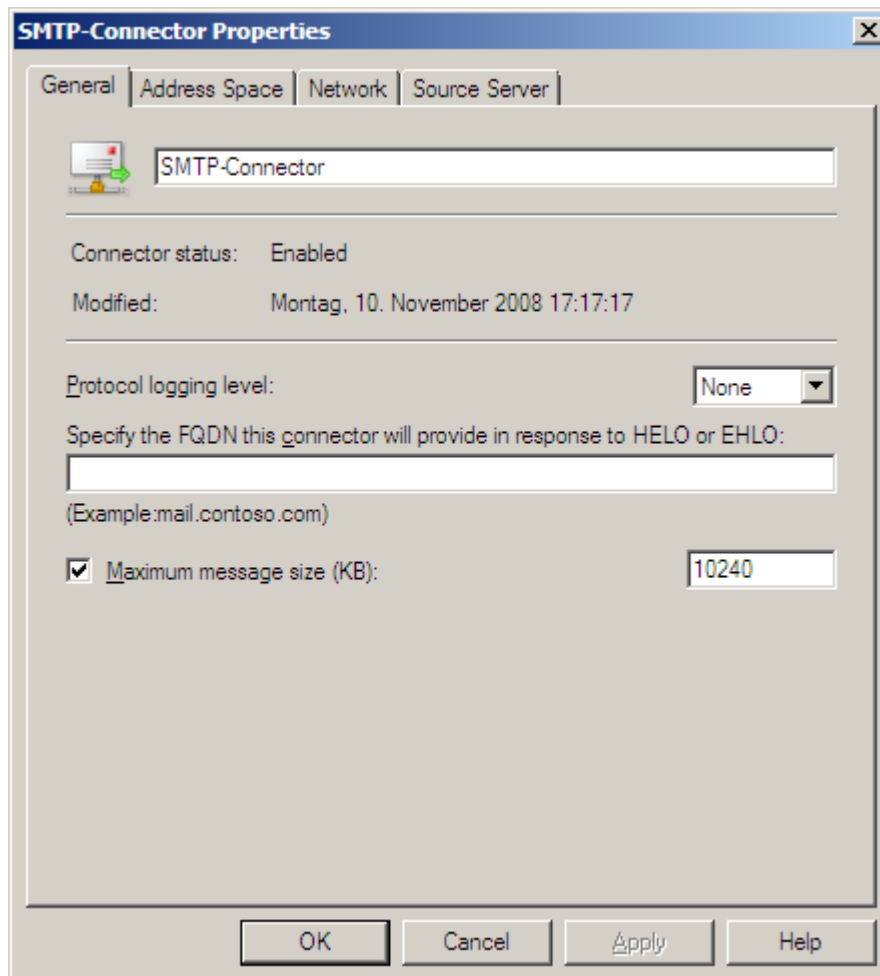
#### a ) Sending e-mails via SMTP

First you have to change the Smarthost address into the local IP address.

**Note:** Never use the syntax *localhost* or *127.0.0.1*, but always the local IP address of the server.

- Organization Configuration
- Hub Transport
- Send Connectors (Properties)

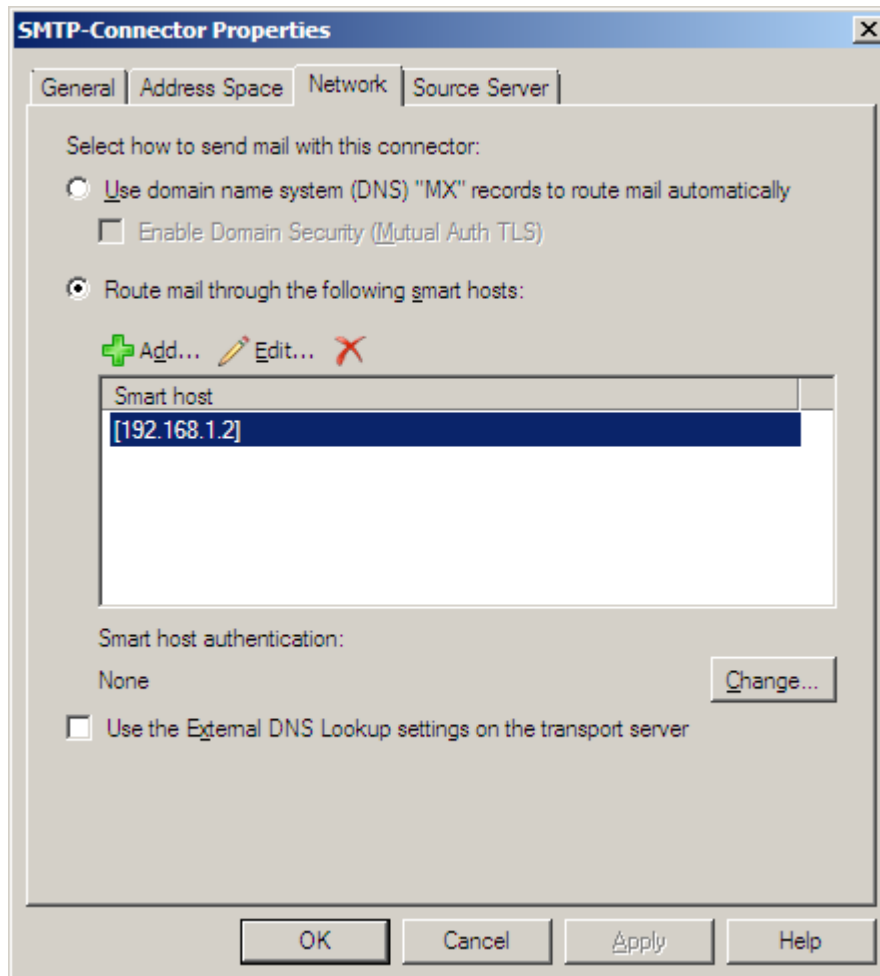
#### Tab „General“





## Well up on G DATA business solutions

### Tab „Network“



**Note:** 192.168.1.2 is *localhost* (127.0.0.1)

**Keep in mind:** **Restart the Exchange services!**  
**Otherwise the settings will not be adopted.**



## Well up on G DATA business solutions

It would be advisable to change outgoing SMTP port from 25 to 7025 for example.

Use the Exchange Management Shell.

Open the Exchange Management Shell and type following command:

***Set-SendConnector-Identity "SENDCONNECTORNAME" -port 7025***

```
Machine: 2008ENT64MK | Scope: MK2008.DE
[PS] C:\>Set-SendConnector -Identity "SMTP-Connector" -port 7025
[PS] C:\>_
```

Check modification with the command:

***Get-SendConnector-Identity "SENDCONNECTORNAME" | fl***

```
Machine: 2008ENT64MK | Scope: MK2008.DE
[PS] C:\>Get-SendConnector -Identity "SMTP-Connector" | fl
AddressSpaces           : <SMTP:*;1>
AuthenticationCredential :
Comment                 :
ConnectedDomains        : {}
ConnectionInactivityTimeout : 00:10:00
DNSRoutingEnabled       : False
DomainSecureEnabled     : False
Enabled                  : True
ForceHELO                : False
Fqdn                     :
HomeMTA                  : Microsoft MTA
HomeMtaServerId         : 2008ENT64MK
Identity                 : SMTP-Connector
IgnoreSTARTLS           : False
IsScopedConnector       : False
IsSmtplibConnector      : True
LinkedReceiveConnector  :
MaxMessageSize          : 10MB
Name                     : SMTP-Connector
Port                     : 7025
ProtocolLoggingLevel    : None
RequireTLS               : False
SmartHostAuthMechanism  : None
SmartHosts               : <[192.168.1.2]>
SmartHostsString        : [192.168.1.2]
SourceIPAddress         : 0.0.0.0
SourceRoutingGroup      : Exchange Routing Group (DWBGZMFD01QNBJR)
SourceTransportServers  : <2008ENT64MK>
UseExternalDNSServersEnabled : False

[PS] C:\>_
```

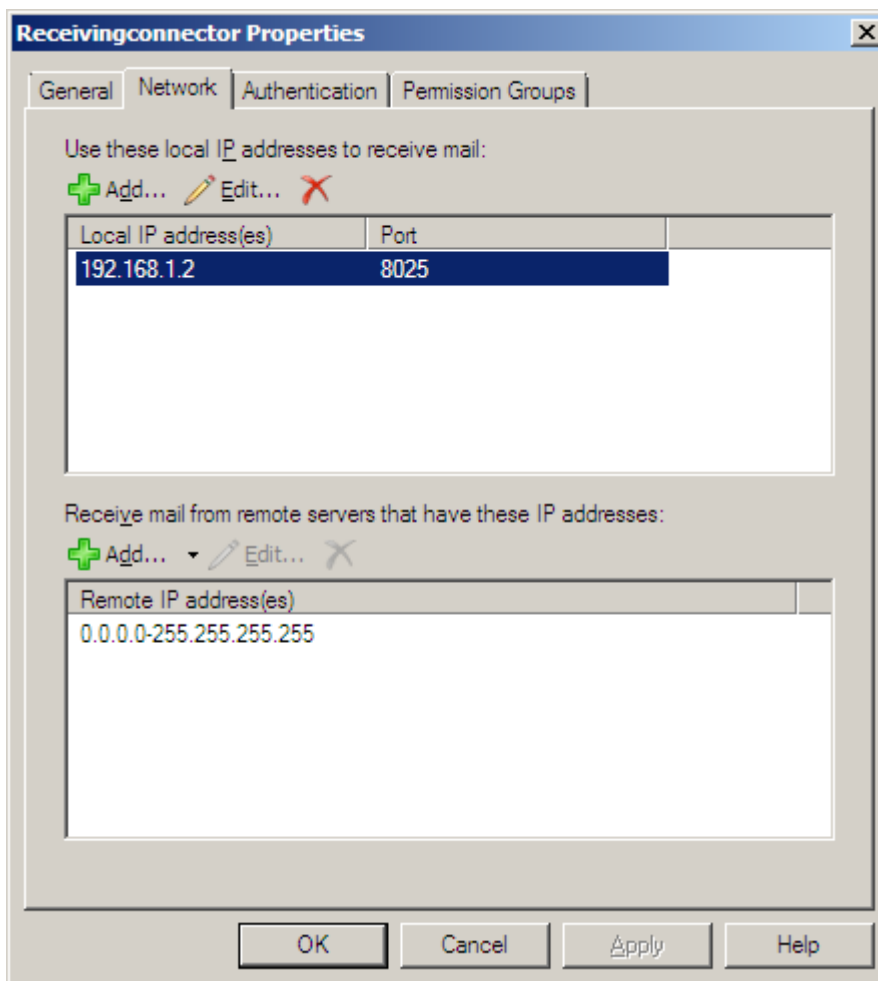


## b ) Receiving e-mails via SMTP

You have to change the SMTP port for receiving e-mails from 25 to (for example) 8025.

- **Server Configuration**
- **Hub Transport**
- **Receiving Connector (Properties)**

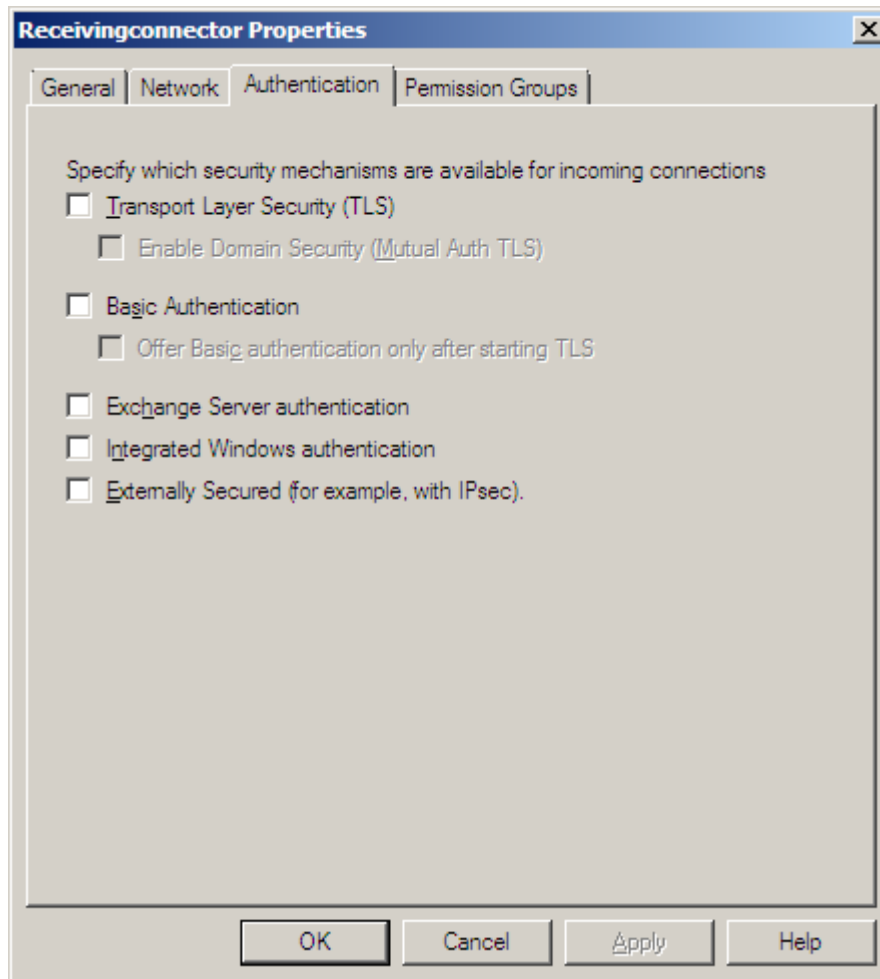
### Tab „Network“



**Note:** 192.168. 1.2 is *localhost* (127.0.0.1)

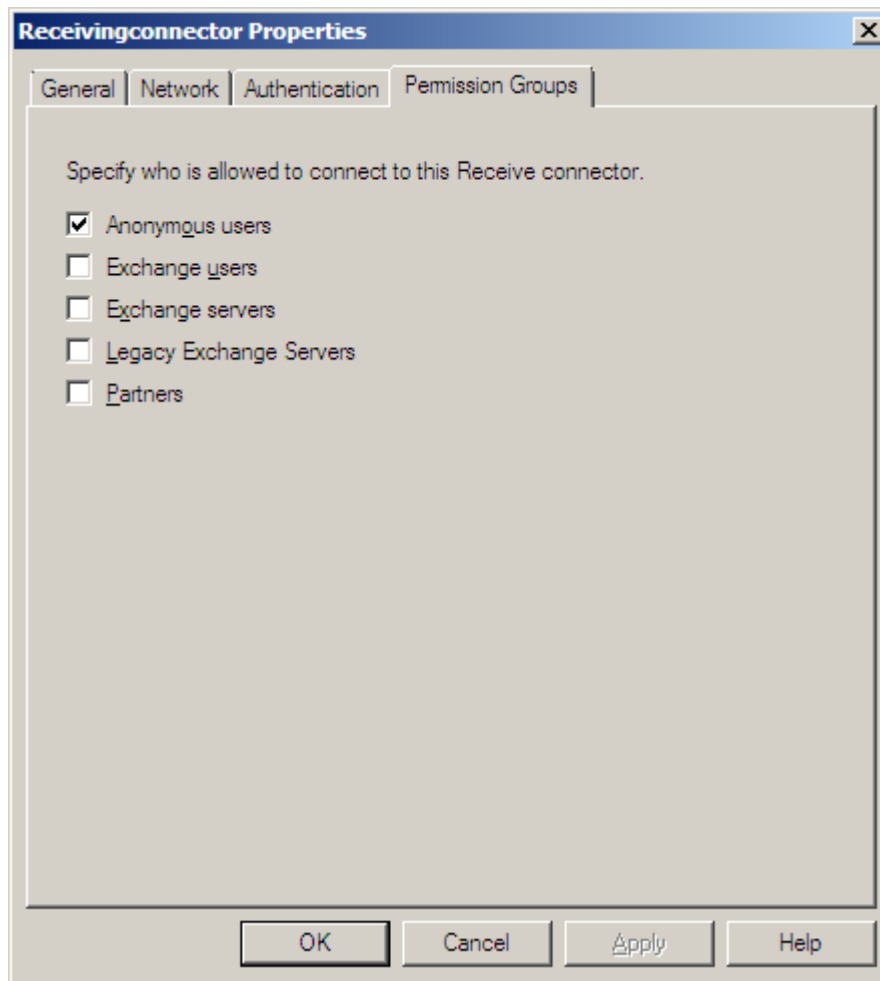


**Tab „Authentication“**





**Tab „Permission Groups“**



**Keep in mind: Restart the Exchange services!  
Otherwise the settings will not be adopted.**



## Well up on G DATA business solutions

---

### c ) Receiving e-mails via POP3

For receiving e-mails via POP3a additional POP-connector of a third party developer must be used for the Microsoft Exchange Server 2007.

#### Example for an existing user account:

User name: John.Doe  
Password: \*\*\*\*\*  
POP3 server: *pop3.provider.com*  
Port: 110

#### The user accounts of the POP-connector must be readjusted as follows:

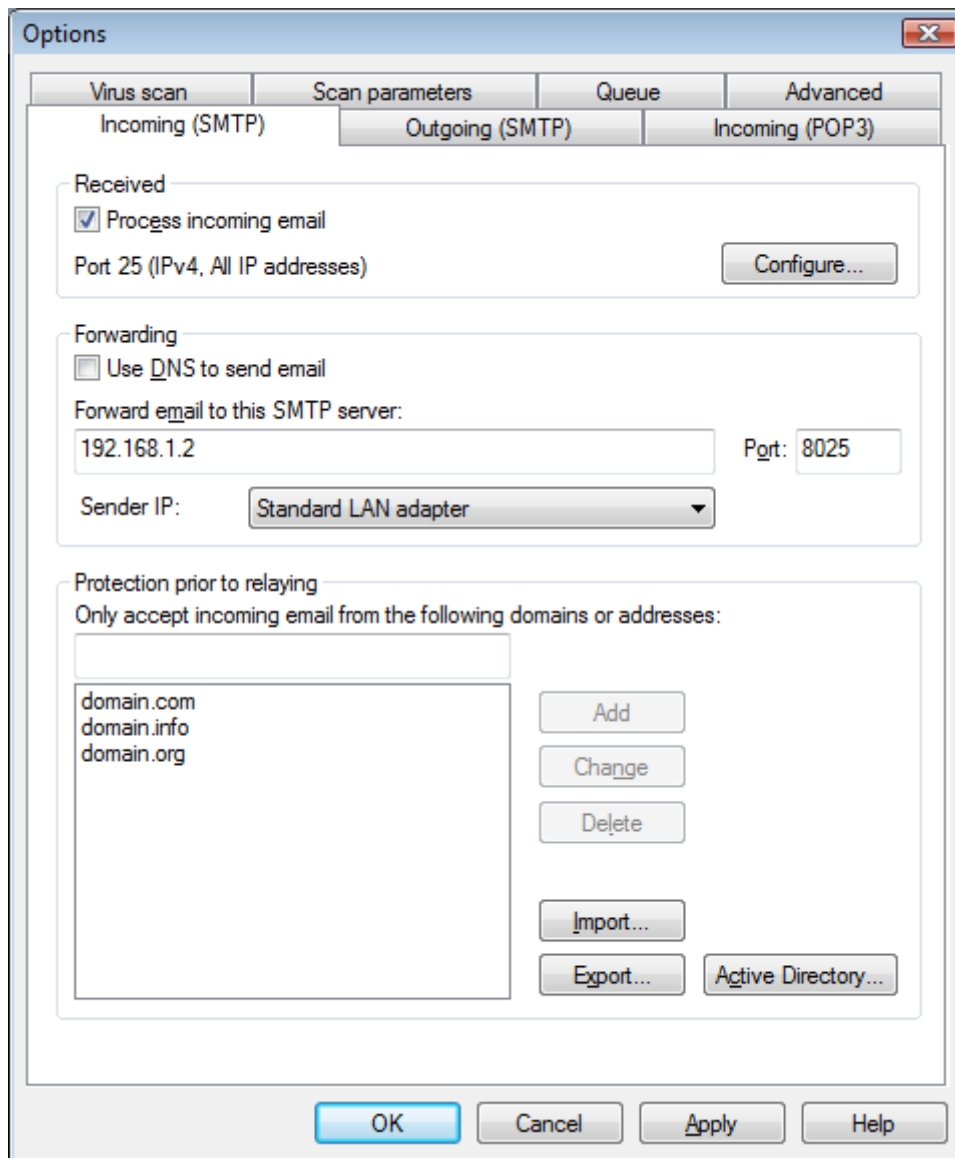
User name: *John.Doe* (as before)  
Password: \*\*\*\*\* (as before)  
POP3 server: *192.168.1.2*  
Port: 7110

**Keep in mind:** Restart the Exchange respectively the POP-Connector services!  
Otherwise the settings will not be adopted.



#### 4.) G DATA MailSecurity configuration

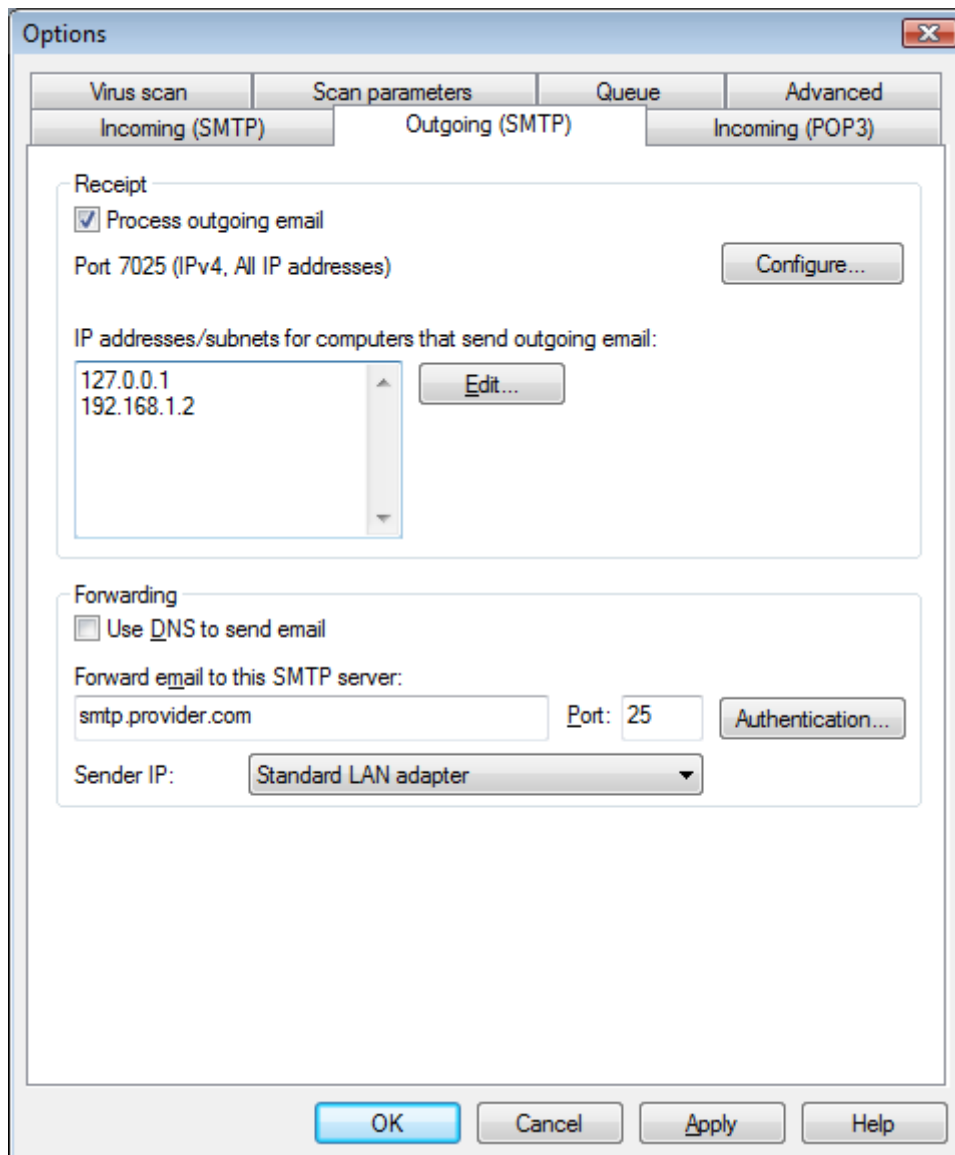
##### a) Tab „Incoming (SMTP)“



**Keep in mind:** "Incoming (SMTP)" should be deactivated, if e-mails will only be received via POP3.

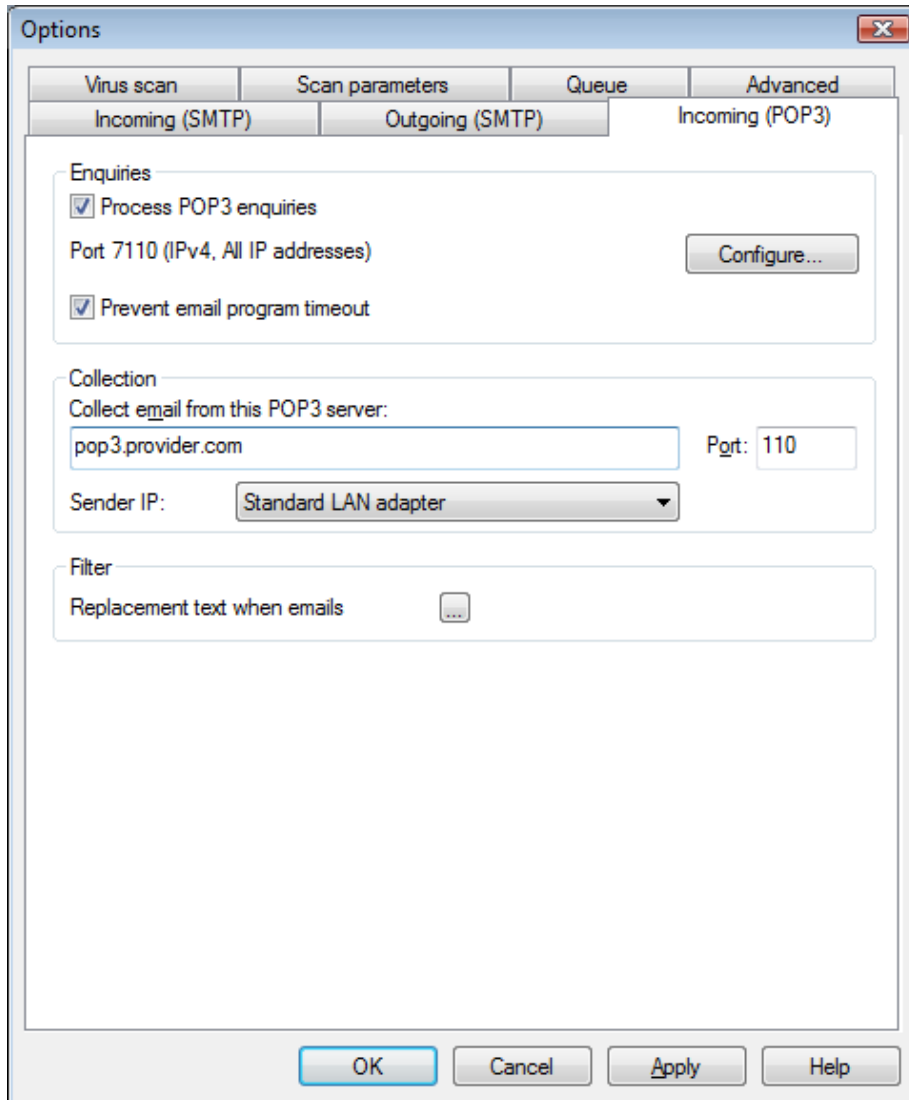


b) Tab „Outgoing (SMTP)“





c) Tab „Incoming (POP3)“



**Querying several POP3 servers**

If several different POP3 servers are to be queried, no POP3 server should be entered in MailSecurity under "Incoming (POP3)". Server transmission is via the user name of the POP3 account. Here the provider's POP3 server has to be entered before the user names and separated using ":".

**Example of an user account:**

User name: pop3.provider.com:John.Doe  
Password: \*\*\*\*\* (as before)  
POP3 server: 192.168.1.2  
Port: 7110